



SRI LAKHA GRANITES

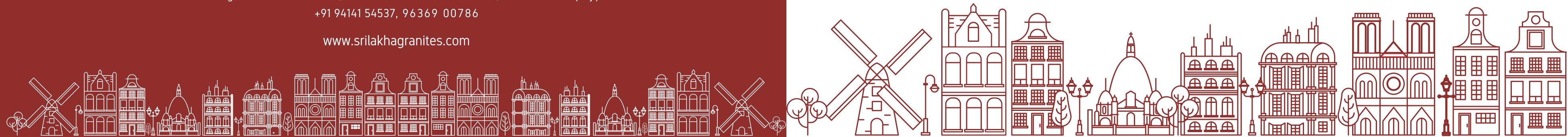
Quarries:

Sri Lakha Granites & Sri Lakha Red Granites
Village - Lakha, Tehsil - Fatehgarh, Jaisalmer (Raj.)
+91 94141 49107, 97836 46661

Factories:

Sri Rameshwar Granites: Bhinmal Road, Bhagli Sindhlan, Jalore-343001 (Raj)
Sri Lakha Granimarmo: G-103, IIIrd Phase RIICO Industrial Area, Jalore-343001 (Raj.)
Sri Rangmahal Granites: G-106, IIIrd Phase RIICO Industrial Area, Jalore-343001 (Raj.)
+91 94141 54537, 96369 00786

www.srilakhagranites.com





SRI RANG MAHAL GRANITES



SRI RAMESHWAR GRANITES



SRI LAKHA GRANIMARMO

INTRODUCTION

SRI LAKHA GRANITE

FACTORIES & QUARRY

CLIENTELE







INTRODUCTION

Sri Lakha Granites was established and started mining and production in 2003, in Lakha village, Rajasthan where our first quarry was established. Currently performing from two quarries Sri Lakha Granites and Sri Lakha Red Granites, we have our functional bases at three factories - Sri Rang Mahal Granites, Sri Lakha Granimarmo and Sri Rameshwar Granites. Since then, our understanding, of the products, and clientele have exponentially grown, as we have controlled our resources and logistics. Our first factory, Sri Rang Mahal, was inaugurated in 2005 at Jalore, Rajasthan, which has now expanded to three Factories – each cater to their individual value proposition models.

Today, our worldwide reputation in the natural stone sector has been predominantly gained through dominance in the field of red granite.

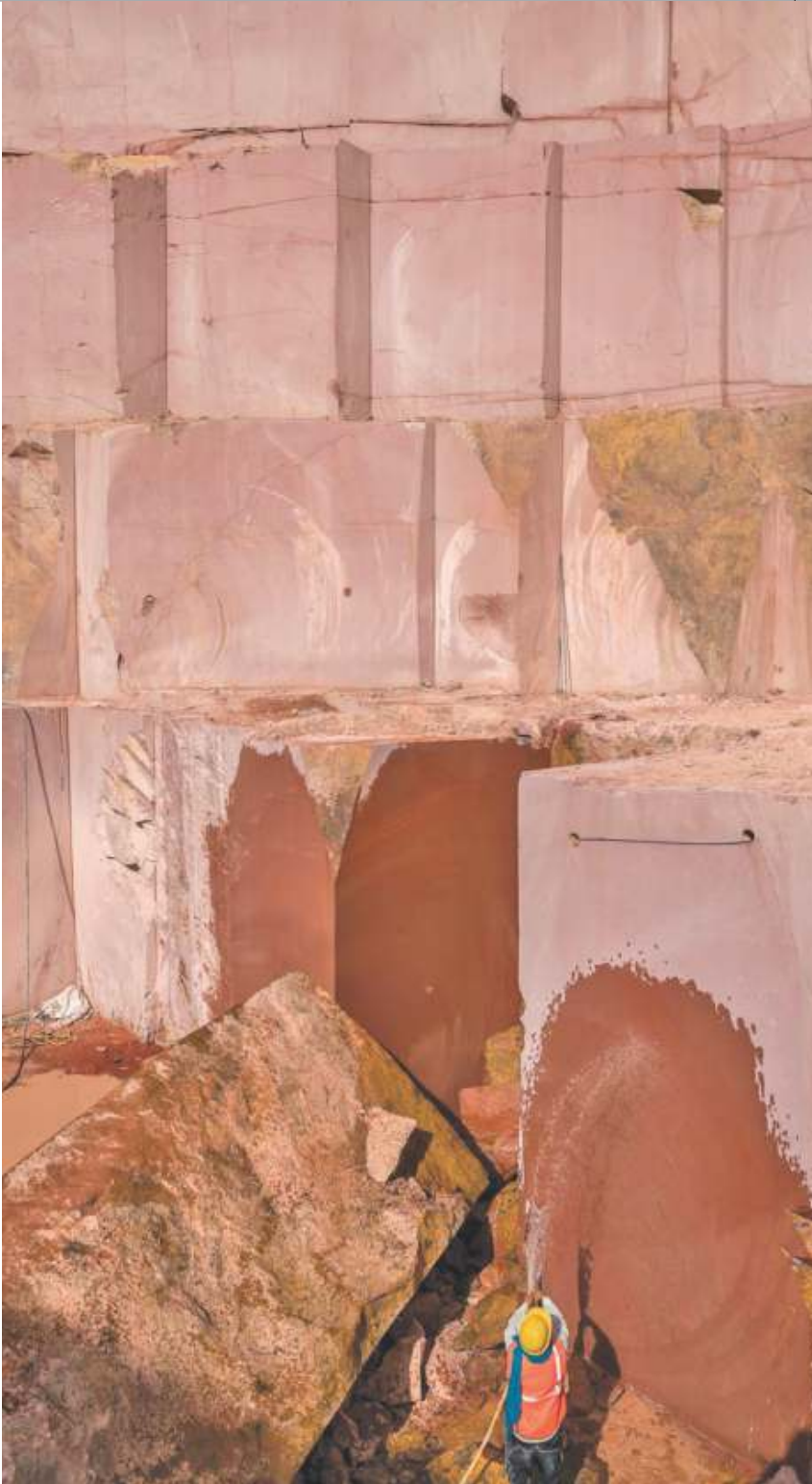
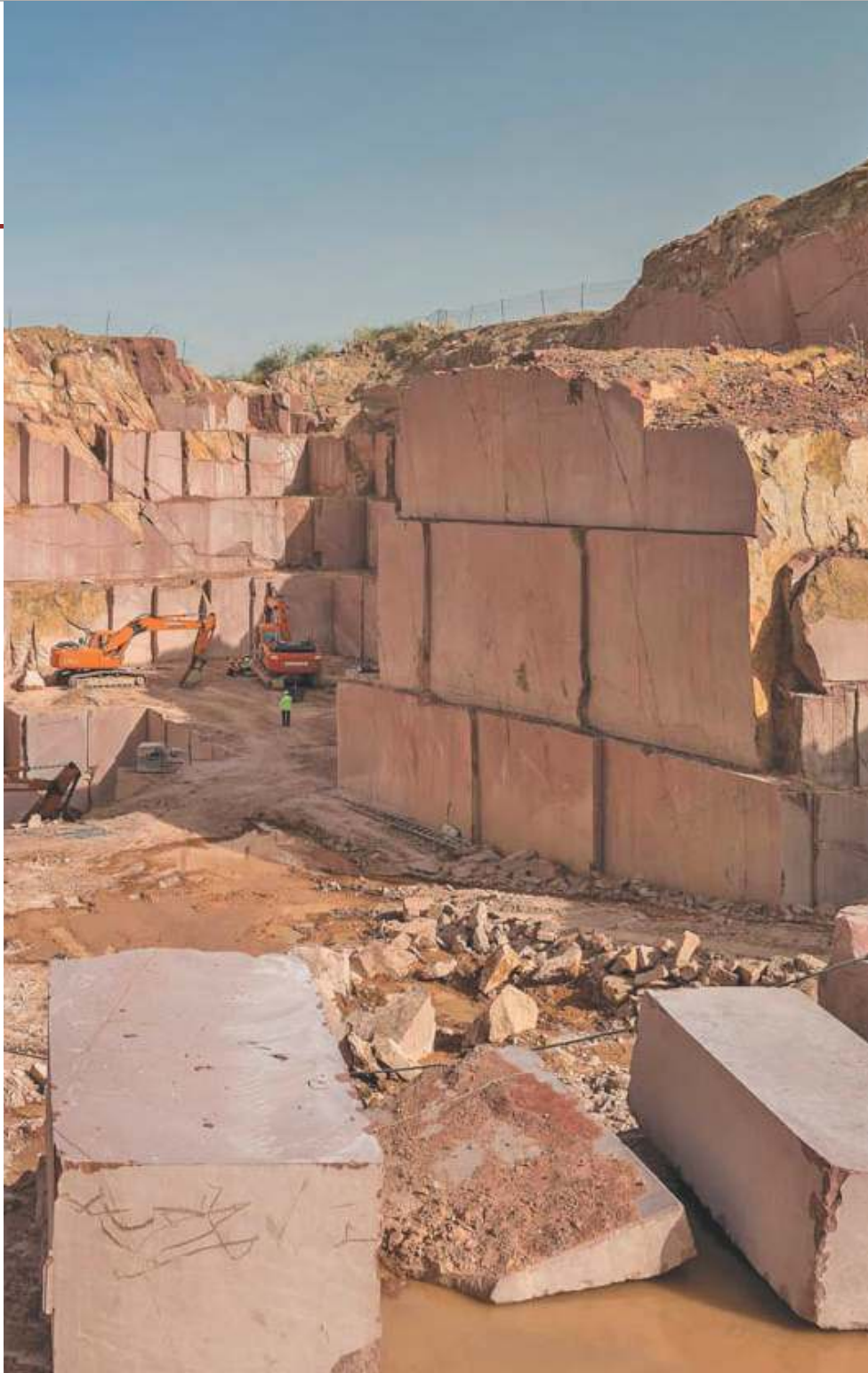


SRI LAKHA GRANITE

Sri Rang Mahal Granites is the aspirational cure for the Indian granite industry, purely owing to its dominance in the red granite sector. In a country like India where sand and stone almost resonate culture, there are only few forms of granite, which are recognized nation-wide. Lakha Red granite speaks volumes in terms of sophistication and finesse, which has translated into exceptional demand within the granite industry.

Our products range from slabs of customizable sizes to ready-made blocks for mosaic flooring which are used aplenty in national heritage locations. The products are polished, or flamed to suit the interest of our customers. Over and above the customized merchandize, our most popular product is the 18 and 20 mm thick polished Lakha Red granite slabs. Thicknesses of 22, 25, 30 and 50 mm are also available. The standard widths that we adhere to are typically as wide as 39 inches or 3 feet. Lengths range from an average of 9.10 feet to around 11.5 feet, the former being more commonplace.

Lakha Red Granite is synonymous with Barmer Red Granite tiles, Balmoral Red granite, Lakha Red granite, Indian Lakha Red Granite tiles, or Lakshmi Red Known in Gujarat.





FACTORIES & QUARRIES

Sri Rang Mahal Granites has an impressive pedigree in the business of red granite production, owing to its monopoly in the field of highest quality granite production in Rajasthan and experience of over 25 years.

The establishment currently orchestrates the concept of renewed finesse in the granite industry. Having stemmed from the idea of propagating Red Granite as a new category under the umbrella of Indian Black granite, Rang Mahal has established itself as an unequivocally superior brand. Our company has its roots in three factories across Rajasthan - Sri Rang Mahal Granites, Sri Lakha Granimarmo and Sri Rameshwar Granites. Notably our operations are concentrated around two quarries - Sri Lakha Granites & Sri Lakha Red Granites. We have constantly excelled in the quality of our deliverables owing to an exceptional workforce- Trained employee who specialize in quarrying, elaboration and polishing. Polishing techniques include flaming, leather polishing, sand-blasting and generic polishing.

We have also constantly recruited new talent, to keep abreast of novel and dynamic working styles. The tools that are used in our factories are of the highest redeemable standard and we have incorporated technology specialized equipment. Our products are shaped using a total of six cutters, wherein all the three factories have one single and one multi cutter respectively.



CLIENTELE

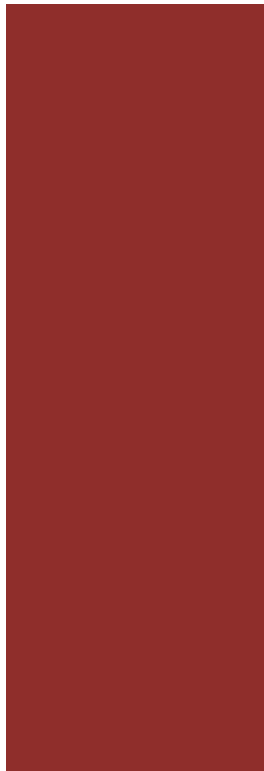
In the international context, Lakha Red granite can be found in approximately 15 mines across the world today. This statistic has noticeably led to abundance in our exports to various countries like Belgium, Dubai, Greece and Brazil. In India, our merchandize is concentrated around the cities of Bengaluru, Coimbatore, Kerala, Mumbai, Ahmedabad and Delhi.

Our clientele includes R.P.G. Group, Bengaluru, National Granite, Delhi, Kohinoor Granite, The Pearl Granite, Chennai, Jain Marble, Hyderabad, VIP Marble, Raipur, Granite World, Raipur, and Stone World, Raipur. Their established reputations in the industry have further garnered us the interest of investors in the sector.

Well-known exhibits of Lakha red granite include palaces, hotels, and graveyards. Interiors are also often accessoried with the granite for the countertops, kitchen-slabs, cladding, and flooring. In the cities of Varanasi, Vadodara, Coimbatore we support logistics to supply products to well-known temples directly from our quarries



Rang Mahal Hotel



Lakha Red Granite Installed at Rang Mahal Hotel

